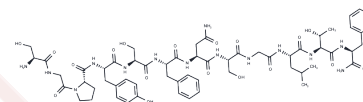


SALMF amide 2

Chemical Properties

CAS No. :	134439-74-0
Formula:	C59H82N14O18
Molecular Weight:	1275.37
Storage:	Keep away from moisture Powder: -20°C for 3 years In solvent: -80°C for 1 year <small>Actual storage temperature shall be subject to the COA.</small>



Biological Description

Description	SALMFamide 2, a neuropeptide S2 derived from the starfish <i>Asterias rubens</i> , plays a regulatory role in the eversion of the cardiac stomach in starfish [1].
In vivo	SALMF amide 2 (1 mM), when injected into the perivisceral coelom of starfish, induces cardiac ectopia within 5 minutes [1].

Preparing Stock Solutions

	1mg	5mg	10mg
1 mM	0.7841 mL	3.9204 mL	7.8409 mL
5 mM	0.1568 mL	0.7841 mL	1.5682 mL
10 mM	0.0784 mL	0.392 mL	0.7841 mL
50 mM	0.0157 mL	0.0784 mL	0.1568 mL

Please select the appropriate solvent to prepare the stock solution, according to the solubility of the product in different solvents. Please use it as soon as possible.

Note: The dilution table applies only to solid products. For liquid products, please calculate the stock solution based on the stated concentration and/or density.

Inhibitor · Natural Compounds · Compound Libraries · Recombinant Proteins

This product is for Research Use Only · Not for Human or Veterinary or Therapeutic Use

Tel: 781-999-4286 E_mail: info@targetmol.com Address: 34 Washington Street, Wellesley Hills, MA 02481