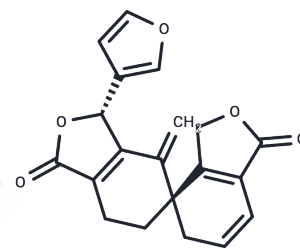


Salvileucalin A

Chemical Properties

CAS No. : 1053241-84-1
 Formula: C₂₀H₁₆O₅
 Molecular Weight: 336.34
 Storage: Powder: -20°C for 3 years | In solvent: -80°C for 1 year
 Actual storage temperature shall be subject to the COA.



Biological Description

Description	Salvileucalin A, a neo-clerodane diterpenoid, is extracted from the aerial parts of <i>Salvia leucantha</i> . [1]
-------------	---

Preparing Stock Solutions

	1mg	5mg	10mg
1 mM	2.9732 mL	14.8659 mL	29.7318 mL
5 mM	0.5946 mL	2.9732 mL	5.9464 mL
10 mM	0.2973 mL	1.4866 mL	2.9732 mL
50 mM	0.0595 mL	0.2973 mL	0.5946 mL

Please select the appropriate solvent to prepare the stock solution, according to the solubility of the product in different solvents. Please use it as soon as possible.

Note: The dilution table applies only to solid products. For liquid products, please calculate the stock solution based on the stated concentration and/or density.

Inhibitor · Natural Compounds · Compound Libraries · Recombinant Proteins

This product is for Research Use Only · Not for Human or Veterinary or Therapeutic Use

Tel:781-999-4286 E_mail:info@targetmol.com Address:34 Washington Street,Wellesley Hills,MA 02481