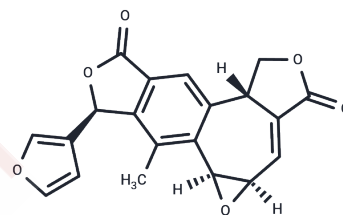


Salvileucantholide

Chemical Properties

CAS No. : 158994-33-3
 Formula: C₂₀H₁₄O₆
 Molecular Weight: 350.32
 Storage: Powder: -20°C for 3 years | In solvent: -80°C for 1 year
 Actual storage temperature shall be subject to the COA.



Biological Description

Description	Salvileucantholide, a diterpenoid extracted from <i>Salvia leucantha</i> [1], exhibits noteworthy pharmacological properties.
-------------	---

Preparing Stock Solutions

	1mg	5mg	10mg
1 mM	2.8545 mL	14.2727 mL	28.5453 mL
5 mM	0.5709 mL	2.8545 mL	5.7091 mL
10 mM	0.2855 mL	1.4273 mL	2.8545 mL
50 mM	0.0571 mL	0.2855 mL	0.5709 mL

Please select the appropriate solvent to prepare the stock solution, according to the solubility of the product in different solvents. Please use it as soon as possible.

Note: The dilution table applies only to solid products. For liquid products, please calculate the stock solution based on the stated concentration and/or density.

Inhibitor · Natural Compounds · Compound Libraries · Recombinant Proteins

This product is for Research Use Only · Not for Human or Veterinary or Therapeutic Use

Tel: 781-999-4286 E_mail: info@targetmol.com Address: 34 Washington Street, Wellesley Hills, MA 02481