

SAP6

Chemical Properties

CAS No. : 2568001-51-2

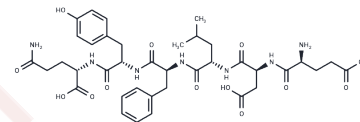
Formula: C₃₈H₅₁N₇O₁₃

Molecular Weight: 813.85

Keep away from moisture

Storage: Powder: -20°C for 3 years | In solvent: -80°C for 1 year

Actual storage temperature shall be subject to the COA.



Biological Description

Description	SAP6 is a bioactive peptide that inhibits virus entry into cells.
Targets(IC50)	SARS-CoV

Preparing Stock Solutions

	1mg	5mg	10mg
1 mM	1.2287 mL	6.1436 mL	12.2873 mL
5 mM	0.2457 mL	1.2287 mL	2.4575 mL
10 mM	0.1229 mL	0.6144 mL	1.2287 mL
50 mM	0.0246 mL	0.1229 mL	0.2457 mL

Please select the appropriate solvent to prepare the stock solution, according to the solubility of the product in different solvents. Please use it as soon as possible.

Note: The dilution table applies only to solid products. For liquid products, please calculate the stock solution based on the stated concentration and/or density.

Inhibitor · Natural Compounds · Compound Libraries · Recombinant Proteins

This product is for Research Use Only · Not for Human or Veterinary or Therapeutic Use

Tel: 781-999-4286

E_mail: info@targetmol.com

Address: 34 Washington Street, Wellesley Hills, MA 02481