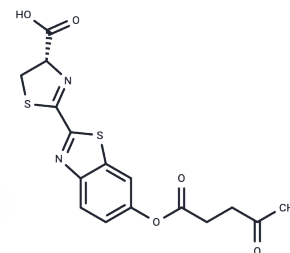


SBP-1

Chemical Properties

CAS No. :	2451986-45-9
Formula:	C ₁₆ H ₁₄ N ₂ O ₅ S ₂
Molecular Weight:	378.42
Storage:	Keep away from direct sunlight Powder: -20°C for 3 years In solvent: -80°C for 1 year <small>Actual storage temperature shall be subject to the COA.</small>



Biological Description

Description	SBP-1, a sulfite bioluminescent probe (SBP), demonstrates excellent responsivity, selectivity, and sensitivity for sulfite detection. Its sulfite recognition is predicated on a sulfite-mediated intramolecular cleavage reaction mechanism. Applicable in living animals, SBP-1 can detect both exogenous and endogenous sulfite and is capable of quantitative sulfite measurement within a specified concentration range in solution [1].
Targets(IC50)	Others

Preparing Stock Solutions

	1mg	5mg	10mg
1 mM	2.6426 mL	13.2128 mL	26.4257 mL
5 mM	0.5285 mL	2.6426 mL	5.2851 mL
10 mM	0.2643 mL	1.3213 mL	2.6426 mL
50 mM	0.0529 mL	0.2643 mL	0.5285 mL

Please select the appropriate solvent to prepare the stock solution, according to the solubility of the product in different solvents. Please use it as soon as possible.

Note: The dilution table applies only to solid products. For liquid products, please calculate the stock solution based on the stated concentration and/or density.

Inhibitor · Natural Compounds · Compound Libraries · Recombinant Proteins

This product is for Research Use Only · Not for Human or Veterinary or Therapeutic Use

Tel:781-999-4286 E_mail:info@targetmol.com Address:34 Washington Street,Wellesley Hills,MA 02481