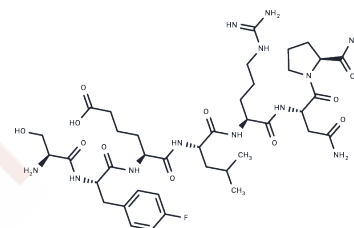


Ser-parafluoroPhe-Aad-Leu-Arg-Asn-Pro-NH₂

Chemical Properties

CAS No. :	237409-87-9
Formula:	C ₃₉ H ₆₁ FN ₁₂ O ₁₁
Molecular Weight:	892.97
Storage:	Keep away from moisture Powder: -20°C for 3 years In solvent: -80°C for 1 year <small>Actual storage temperature shall be subject to the COA.</small>



Biological Description

Description	Ser-parafluoroPhe-Aad-Leu-Arg-Asn-Pro-NH ₂ is a biologically active peptide. Structure-activity studies of the thrombin receptor-tethered ligand SFLLRNP highlighted the pivotal role of the Phe-2-phenyl group in receptor recognition, while substitution with para-fluorophenylalanine [(p-F)Phe] increased its activity.
-------------	---

Preparing Stock Solutions

	1mg	5mg	10mg
1 mM	1.1199 mL	5.5993 mL	11.1986 mL
5 mM	0.224 mL	1.1199 mL	2.2397 mL
10 mM	0.112 mL	0.5599 mL	1.1199 mL
50 mM	0.0224 mL	0.112 mL	0.224 mL

Please select the appropriate solvent to prepare the stock solution, according to the solubility of the product in different solvents. Please use it as soon as possible.

Note: The dilution table applies only to solid products. For liquid products, please calculate the stock solution based on the stated concentration and/or density.

Inhibitor · Natural Compounds · Compound Libraries · Recombinant Proteins

This product is for Research Use Only · Not for Human or Veterinary or Therapeutic Use

Tel: 781-999-4286 E_mail: info@targetmol.com Address: 34 Washington Street, Wellesley Hills, MA 02481