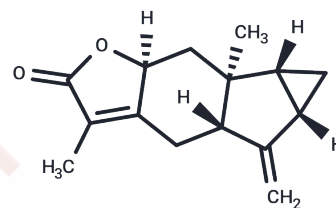


Shizukanolide

Chemical Properties

CAS No. :	70578-36-8
Formula:	C ₁₅ H ₁₈ O ₂
Molecular Weight:	230.3
Storage:	Powder: -20°C for 3 years In solvent: -80°C for 1 year Actual storage temperature shall be subject to the COA.



Biological Description

Description	Shizukanolide, a sesquiterpene lactone extracted from <i>Chloranthus japonicus</i> (Chloranthaceae), has a dehydro derivative that exhibits moderate antifungal activity [1].
-------------	---

Preparing Stock Solutions

	1mg	5mg	10mg
1 mM	4.3422 mL	21.7108 mL	43.4216 mL
5 mM	0.8684 mL	4.3422 mL	8.6843 mL
10 mM	0.4342 mL	2.1711 mL	4.3422 mL
50 mM	0.0868 mL	0.4342 mL	0.8684 mL

Please select the appropriate solvent to prepare the stock solution, according to the solubility of the product in different solvents. Please use it as soon as possible.

Note: The dilution table applies only to solid products. For liquid products, please calculate the stock solution based on the stated concentration and/or density.

Inhibitor · Natural Compounds · Compound Libraries · Recombinant Proteins

This product is for Research Use Only · Not for Human or Veterinary or Therapeutic Use

Tel:781-999-4286 E_mail:info@targetmol.com Address:34 Washington Street,Wellesley Hills,MA 02481