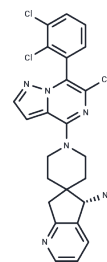


SHP2-IN-17

## Chemical Properties

CAS No. : 2941498-93-5  
 Formula: C<sub>25</sub>H<sub>24</sub>Cl<sub>2</sub>N<sub>6</sub>  
 Molecular Weight: 479.4  
 Storage: Powder: -20°C for 3 years | In solvent: -80°C for 1 year  
 Actual storage temperature shall be subject to the COA.



## Biological Description

Description	SHP2-IN-17 (compound 192) is a potent SHP2 inhibitor with an IC <sub>50</sub> of 2 nM, showing potential for glioblastoma research [1].
Targets(IC <sub>50</sub> )	Others,Phosphatase

## Preparing Stock Solutions

	1mg	5mg	10mg
1 mM	2.0859 mL	10.4297 mL	20.8594 mL
5 mM	0.4172 mL	2.0859 mL	4.1719 mL
10 mM	0.2086 mL	1.043 mL	2.0859 mL
50 mM	0.0417 mL	0.2086 mL	0.4172 mL

Please select the appropriate solvent to prepare the stock solution, according to the solubility of the product in different solvents. Please use it as soon as possible.

Note: The dilution table applies only to solid products. For liquid products, please calculate the stock solution based on the stated concentration and/or density.

Inhibitor · Natural Compounds · Compound Libraries · Recombinant Proteins

This product is for Research Use Only · Not for Human or Veterinary or Therapeutic Use

Tel:781-999-4286 E\_mail:info@targetmol.com Address:34 Washington Street,Wellesley Hills,MA 02481