

SLSLSPG

Chemical Properties

CAS No. : 943235-75-4

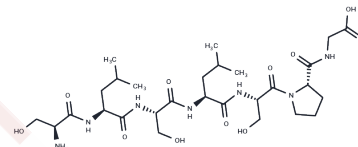
Formula: C₂₈H₄₉N₇O₁₁

Molecular Weight: 659.73

Keep away from moisture

Storage: Powder: -20°C for 3 years | In solvent: -80°C for 1 year

Actual storage temperature shall be subject to the COA.



Biological Description

Description

SLSLSPG, a common variant in immunoglobulin G (IgG) [1], is derived from the C-terminal end of the heavy chain of human Igγ-1.

Preparing Stock Solutions

	1mg	5mg	10mg
1 mM	1.5158 mL	7.5789 mL	15.1577 mL
5 mM	0.3032 mL	1.5158 mL	3.0315 mL
10 mM	0.1516 mL	0.7579 mL	1.5158 mL
50 mM	0.0303 mL	0.1516 mL	0.3032 mL

Please select the appropriate solvent to prepare the stock solution, according to the solubility of the product in different solvents. Please use it as soon as possible.

Note: The dilution table applies only to solid products. For liquid products, please calculate the stock solution based on the stated concentration and/or density.

Inhibitor · Natural Compounds · Compound Libraries · Recombinant Proteins

This product is for Research Use Only · Not for Human or Veterinary or Therapeutic Use

Tel: 781-999-4286

E_mail: info@targetmol.com

Address: 34 Washington Street, Wellesley Hills, MA 02481