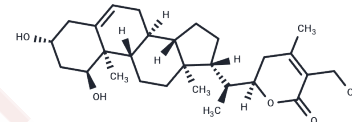


Sominone

Chemical Properties

CAS No. : 98569-64-3
 Formula: C₂₈H₄₂O₅
 Molecular Weight: 458.63
 Storage: Powder: -20°C for 3 years | In solvent: -80°C for 1 year
 Actual storage temperature shall be subject to the COA.



Biological Description

Description	Withanolide sominone can be isolated from the herb Withania somnifera [1].
-------------	--

Preparing Stock Solutions

	1mg	5mg	10mg
1 mM	2.1804 mL	10.902 mL	21.8041 mL
5 mM	0.4361 mL	2.1804 mL	4.3608 mL
10 mM	0.218 mL	1.0902 mL	2.1804 mL
50 mM	0.0436 mL	0.218 mL	0.4361 mL

Please select the appropriate solvent to prepare the stock solution, according to the solubility of the product in different solvents. Please use it as soon as possible.

Note: The dilution table applies only to solid products. For liquid products, please calculate the stock solution based on the stated concentration and/or density.

Reference

Kuboyama T, et al. Withanoside IV and its active metabolite, sominone, attenuate Abeta(25-35)-induced neurodegeneration. *Eur J Neurosci.* 2006 Mar;23(6):1417-26.

Inhibitor · Natural Compounds · Compound Libraries · Recombinant Proteins

This product is for Research Use Only · Not for Human or Veterinary or Therapeutic Use

Tel:781-999-4286 E_mail:info@targetmol.com Address:34 Washington Street,Wellesley Hills,MA 02481