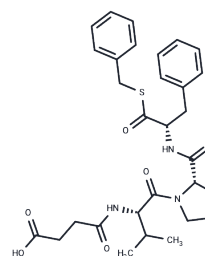


Suc-Val-Pro-Phe-SBzl

Chemical Properties

CAS No. :	95192-51-1
Formula:	C ₃₀ H ₃₇ N ₃ O ₆ S
Molecular Weight:	567.7
Storage:	Keep away from moisture Powder: -20°C for 3 years In solvent: -80°C for 1 year <small>Actual storage temperature shall be subject to the COA.</small>



Biological Description

Description	Suc-Val-Pro-Phe-SBzl (succinyl-valine-proline-phenylalanine thiobenzyl ester) is a CatG enzyme inhibitor with IC ₅₀ values between 111 and 225 mM.
Targets(IC ₅₀)	Cysteine Protease

Preparing Stock Solutions

	1mg	5mg	10mg
1 mM	1.7615 mL	8.8075 mL	17.6149 mL
5 mM	0.3523 mL	1.7615 mL	3.523 mL
10 mM	0.1761 mL	0.8807 mL	1.7615 mL
50 mM	0.0352 mL	0.1761 mL	0.3523 mL

Please select the appropriate solvent to prepare the stock solution, according to the solubility of the product in different solvents. Please use it as soon as possible.

Note: The dilution table applies only to solid products. For liquid products, please calculate the stock solution based on the stated concentration and/or density.

Inhibitor · Natural Compounds · Compound Libraries · Recombinant Proteins

This product is for Research Use Only · Not for Human or Veterinary or Therapeutic Use

Tel: 781-999-4286 E_mail: info@targetmol.com Address: 34 Washington Street, Wellesley Hills, MA 02481