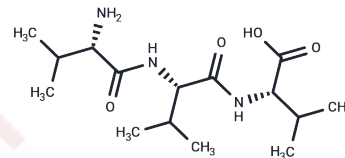


Tri-valine

Chemical Properties

CAS No. :	28130-13-4
Formula:	C ₁₅ H ₂₉ N ₃ O ₄
Molecular Weight:	315.41
Storage:	Keep away from moisture Powder: -20°C for 3 years In solvent: -80°C for 1 year <small>Actual storage temperature shall be subject to the COA.</small>



Biological Description

Description	Tri-valine (NSC 35938) is a polypeptide derived from creatine kinase, β -enolase, triosephosphate isomerase, and glyceraldehyde 3-phosphate dehydrogenase [1].
-------------	--

Preparing Stock Solutions

	1mg	5mg	10mg
1 mM	3.1705 mL	15.8524 mL	31.7048 mL
5 mM	0.6341 mL	3.1705 mL	6.341 mL
10 mM	0.317 mL	1.5852 mL	3.1705 mL
50 mM	0.0634 mL	0.317 mL	0.6341 mL

Please select the appropriate solvent to prepare the stock solution, according to the solubility of the product in different solvents. Please use it as soon as possible.

Note: The dilution table applies only to solid products. For liquid products, please calculate the stock solution based on the stated concentration and/or density.

Inhibitor · Natural Compounds · Compound Libraries · Recombinant Proteins

This product is for Research Use Only · Not for Human or Veterinary or Therapeutic Use

Tel: 781-999-4286 E_mail: info@targetmol.com Address: 34 Washington Street, Wellesley Hills, MA 02481