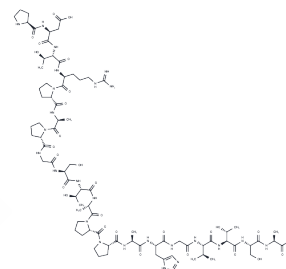


## Tumour-associated MUC1 epitope

## Chemical Properties

CAS No. :	129437-45-2
Formula:	C80H127N25O28
Molecular Weight:	1887.02
Storage:	Keep away from moisture Powder: -20°C for 3 years   In solvent: -80°C for 1 year <small>Actual storage temperature shall be subject to the COA.</small>



## Biological Description

Description	Tumor-associated MUC1 epitope, a biologically active peptide, is the distinctive feature of MUC1 mucin—a significantly glycosylated type I transmembrane glycoprotein. Its extracellular domain comprises variable numbers of tandem repeats (VNTR) of a 20 amino acid sequence. This peptide is overexpressed on the surface of various human adenocarcinomas and hematological malignancies like multiple myeloma and B-cell lymphoma, rendering MUC1 a widely relevant target for immunotherapeutic approaches.
-------------	--

## Preparing Stock Solutions

	1mg	5mg	10mg
1 mM	0.5299 mL	2.6497 mL	5.2994 mL
5 mM	0.106 mL	0.5299 mL	1.0599 mL
10 mM	0.053 mL	0.265 mL	0.5299 mL
50 mM	0.0106 mL	0.053 mL	0.106 mL

Please select the appropriate solvent to prepare the stock solution, according to the solubility of the product in different solvents. Please use it as soon as possible.

Note: The dilution table applies only to solid products. For liquid products, please calculate the stock solution based on the stated concentration and/or density.

**Inhibitor · Natural Compounds · Compound Libraries · Recombinant Proteins**

This product is for Research Use Only · Not for Human or Veterinary or Therapeutic Use

Tel: 781-999-4286 E\_mail: info@targetmol.com Address: 34 Washington Street, Wellesley Hills, MA 02481