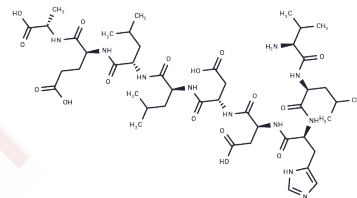


VLHDDLLEA

Chemical Properties

CAS No. : 204931-32-8
 Formula: C₄₅H₇₃N₁₁O₁₆
 Molecular Weight: 1024.13
 Storage: Keep away from moisture
 Powder: -20°C for 3 years | In solvent: -80°C for 1 year
 Actual storage temperature shall be subject to the COA.



Biological Description

Description	VLHDDLLEA, a peptide extractable from the HLA-A*0201 MHC complex, is identifiable by HLA-A*0201-restricted cytotoxic T cells (CTLs). It serves as a research tool in studies of graft versus host disease (GvHD) [1].
-------------	---

Preparing Stock Solutions

	1mg	5mg	10mg
1 mM	0.9764 mL	4.8822 mL	9.7644 mL
5 mM	0.1953 mL	0.9764 mL	1.9529 mL
10 mM	0.0976 mL	0.4882 mL	0.9764 mL
50 mM	0.0195 mL	0.0976 mL	0.1953 mL

Please select the appropriate solvent to prepare the stock solution, according to the solubility of the product in different solvents. Please use it as soon as possible.

Note: The dilution table applies only to solid products. For liquid products, please calculate the stock solution based on the stated concentration and/or density.

Inhibitor · Natural Compounds · Compound Libraries · Recombinant Proteins

This product is for Research Use Only · Not for Human or Veterinary or Therapeutic Use

Tel: 781-999-4286 E_mail: info@targetmol.com Address: 34 Washington Street, Wellesley Hills, MA 02481