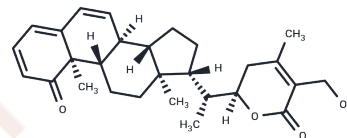


Withasomniferolide A

Chemical Properties

CAS No. : 2365386-74-7
Formula: C₂₈H₃₆O₄
Molecular Weight: 436.58
Storage: Powder: -20°C for 3 years | In solvent: -80°C for 1 year
Actual storage temperature shall be subject to the COA.



Biological Description

Description	Withasomniferolide A, a withanolide extracted from the roots of <i>Withania somnifera</i> , has been identified as a positive activator of the GABAA receptor, isolated using a methanol extract [1].
-------------	---

Preparing Stock Solutions

	1mg	5mg	10mg
1 mM	2.2905 mL	11.4527 mL	22.9053 mL
5 mM	0.4581 mL	2.2905 mL	4.5811 mL
10 mM	0.2291 mL	1.1453 mL	2.2905 mL
50 mM	0.0458 mL	0.2291 mL	0.4581 mL

Please select the appropriate solvent to prepare the stock solution, according to the solubility of the product in different solvents. Please use it as soon as possible.

Note: The dilution table applies only to solid products. For liquid products, please calculate the stock solution based on the stated concentration and/or density.

Inhibitor · Natural Compounds · Compound Libraries · Recombinant Proteins

This product is for Research Use Only · Not for Human or Veterinary or Therapeutic Use

Tel:781-999-4286 E_mail:info@targetmol.com Address:34 Washington Street,Wellesley Hills,MA 02481