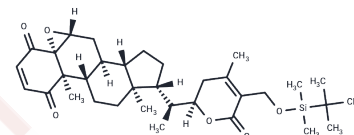


## 4-oxo-27-TBDMS Withaferin A

## Chemical Properties

CAS No. :	1214886-31-3
Formula:	C <sub>34</sub> H <sub>50</sub> O <sub>6</sub> Si
Molecular Weight:	582.853
Storage:	Powder: -20°C for 3 years   In solvent: -80°C for 1 year Actual storage temperature shall be subject to the COA.



## Biological Description

Description	4-oxo-27-TBDMS Withaferin A is a derivative of the steroidal lactone withaferin A that has anticancer activity. <sup>1</sup> It is cytotoxic to A2780 ovarian cancer cells (IC <sub>50</sub> = 17 μM) but not to carboplatin-resistant A2780 (A2780/CP70) cells (IC <sub>50</sub> = >100 μM). It is selective for A2780 cells over non-cancerous ARPE19 cells (IC <sub>50</sub> = 1,660 μM). 4-oxo-27-TBDMS Withaferin A induces DNA fragmentation in A2780 cells.
Targets(IC <sub>50</sub> )	Apoptosis,Others

## Solubility Information

Solubility	DMSO: 5 mg/mL (8.58 mM),Sonication is recommended. DMSO:PBS (pH 7.2) (1:1): 0.5 mg/mL (0.86 mM),Sonication is recommended. DMF: 5 mg/mL (8.58 mM),Sonication is recommended. (< 1 mg/ml refers to the product slightly soluble or insoluble)
------------	---

## Preparing Stock Solutions

	1mg	5mg	10mg
1 mM	1.7157 mL	8.5785 mL	17.1571 mL
5 mM	0.3431 mL	1.7157 mL	3.4314 mL
10 mM	0.1716 mL	0.8579 mL	1.7157 mL
50 mM	0.0343 mL	0.1716 mL	0.3431 mL

Please select the appropriate solvent to prepare the stock solution, according to the solubility of the product in different solvents. Please use it as soon as possible.

Note: The dilution table applies only to solid products. For liquid products, please calculate the stock solution based on the stated concentration and/or density.

Reference

Perestelo, N.R., Llanos, G.G., Reyes, C.P., et al. Expanding the chemical space of withaferin A by incorporating silicon to improve its clinical potential on human ovarian carcinoma cells. J. Med. Chem. 62(9), 4571-4585 (2019).

**Inhibitor · Natural Compounds · Compound Libraries · Recombinant Proteins**

This product is for Research Use Only · Not for Human or Veterinary or Therapeutic Use

Tel:781-999-4286 E\_mail:info@targetmol.com Address:34 Washington Street,Wellesley Hills,MA 02481