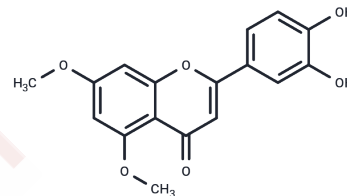


5,7-Dimethoxyluteolin

Chemical Properties

CAS No. :	90363-40-9
Formula:	C ₁₇ H ₁₄ O ₆
Molecular Weight:	314.29
Storage:	Powder: -20°C for 3 years In solvent: -80°C for 1 year Actual storage temperature shall be subject to the COA.



Biological Description

Description	5,7-Dimethoxyluteolin is a natural product from <i>Hovenia acerba</i> . 5,7-Dimethoxyluteolin is a dopamine transporter (DAT) activator with an EC ₅₀ of 3.417 μM.
Targets(IC50)	Dopamine Receptor

Solubility Information

Solubility	DMSO: 98 mg/mL (311.81 mM), Sonication is recommended. (< 1 mg/ml refers to the product slightly soluble or insoluble)
In vivo Formulation	10% DMSO+40% PEG300+5% Tween 80+45% Saline: 3.3 mg/mL (10.5 mM), Sonication is recommended. <i>Please add the solvents sequentially, clarifying the solution as much as possible before adding the next one. Dissolve by heating and/or sonication if necessary. Working solution is recommended to be prepared and used immediately. The formulation provided above is for reference purposes only. In vivo formulations may vary and should be modified based on specific experimental conditions.</i>

Preparing Stock Solutions

	1mg	5mg	10mg
1 mM	3.1818 mL	15.9089 mL	31.8177 mL
5 mM	0.6364 mL	3.1818 mL	6.3635 mL
10 mM	0.3182 mL	1.5909 mL	3.1818 mL
50 mM	0.0636 mL	0.3182 mL	0.6364 mL

Please select the appropriate solvent to prepare the stock solution, according to the solubility of the product in different solvents. Please use it as soon as possible.

Note: The dilution table applies only to solid products. For liquid products, please calculate the stock solution based on the stated concentration and/or density.

Reference

Jiange Zhang, et al. Discovery and synthesis of novel luteolin derivatives as DAT agonists. Bioorg Med Chem. 2010 Nov 15;18(22):7842-8.

Inhibitor · Natural Compounds · Compound Libraries · Recombinant Proteins

This product is for Research Use Only · Not for Human or Veterinary or Therapeutic Use

Tel:781-999-4286 E_mail:info@targetmol.com Address:34 Washington Street,Wellesley Hills,MA 02481