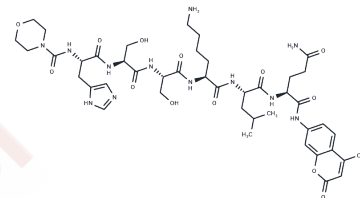


## Prostate Specific Antigen Substrate

## Chemical Properties

CAS No. :	380225-52-5
Formula:	C44H64N12O13
Molecular Weight:	969.05
Storage:	Keep away from direct sunlight Powder: -20°C for 3 years   In solvent: -80°C for 1 year <small>Actual storage temperature shall be subject to the COA.</small>



## Biological Description

Description	Prostate Specific Antigen Substrate is a fluorescent substrate specific to prostate-specific antigen (PSA), facilitating the detection of PSA enzymatic activity [1].
Targets(IC50)	Others,PSMA

## Preparing Stock Solutions

	1mg	5mg	10mg
1 mM	1.0319 mL	5.1597 mL	10.3194 mL
5 mM	0.2064 mL	1.0319 mL	2.0639 mL
10 mM	0.1032 mL	0.516 mL	1.0319 mL
50 mM	0.0206 mL	0.1032 mL	0.2064 mL

Please select the appropriate solvent to prepare the stock solution, according to the solubility of the product in different solvents. Please use it as soon as possible.

Note: The dilution table applies only to solid products. For liquid products, please calculate the stock solution based on the stated concentration and/or density.

**Inhibitor · Natural Compounds · Compound Libraries · Recombinant Proteins**

This product is for Research Use Only · Not for Human or Veterinary or Therapeutic Use

Tel:781-999-4286 E\_mail:info@targetmol.com Address:34 Washington Street,Wellesley Hills,MA 02481