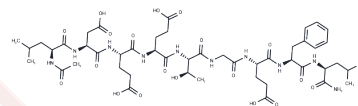


Ac-LDEETGEFL-NH2

Chemical Properties

CAS No. :	2430031-36-8
Formula:	C48H72N10O19
Molecular Weight:	1093.14
Storage:	Keep away from direct sunlight Powder: -20°C for 3 years In solvent: -80°C for 1 year <small>Actual storage temperature shall be subject to the COA.</small>



Biological Description

Description	Ac-LDEETGEFL-NH2 is a 9-mer peptide with a high binding affinity with Keap1 (KD2: 172 nM) and interacts in the Kelch binding pockets. Ac-LDEETGEFL-NH2 can be applied as a probe after being linked to FITC and used as a template in studies about KEAP1/NRF2 inhibitors.
Targets(IC50)	Nrf2

Preparing Stock Solutions

	1mg	5mg	10mg
1 mM	0.9148 mL	4.574 mL	9.148 mL
5 mM	0.183 mL	0.9148 mL	1.8296 mL
10 mM	0.0915 mL	0.4574 mL	0.9148 mL
50 mM	0.0183 mL	0.0915 mL	0.183 mL

Please select the appropriate solvent to prepare the stock solution, according to the solubility of the product in different solvents. Please use it as soon as possible.

Note: The dilution table applies only to solid products. For liquid products, please calculate the stock solution based on the stated concentration and/or density.

Reference

Jihua Zou, et al. Cyclic Peptide Keap1-Nrf2 Protein-Protein Interaction Inhibitors: Design, Synthesis, and In Vivo Treatment of Acute Lung Injury. Journal of Medicinal Chemistry 2024 67 (6), 4889-4903

Inhibitor · Natural Compounds · Compound Libraries · Recombinant Proteins

This product is for Research Use Only · Not for Human or Veterinary or Therapeutic Use

Tel:781-999-4286 E_mail:info@targetmol.com Address:34 Washington Street,Wellesley Hills,MA 02481