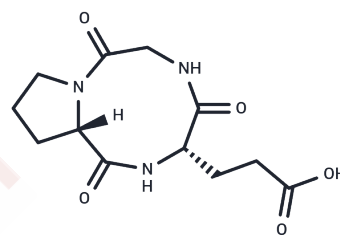


Cyclopetide 2

Chemical Properties

CAS No. :	748142-26-9
Formula:	C ₁₂ H ₁₇ N ₃ O ₅
Molecular Weight:	283.28
Storage:	Keep away from moisture Powder: -20°C for 3 years In solvent: -80°C for 1 year <small>Actual storage temperature shall be subject to the COA.</small>



Biological Description

Description	Cyclopeptide 2 (Compound 2) is a moderately active antimicrobial peptide against <i>B. subtilis</i> , exhibiting a minimum inhibitory concentration (MIC) of 50 µg/mL [1].
Targets(IC50)	Antibacterial

Preparing Stock Solutions

	1mg	5mg	10mg
1 mM	3.5301 mL	17.6504 mL	35.3008 mL
5 mM	0.706 mL	3.5301 mL	7.0602 mL
10 mM	0.353 mL	1.765 mL	3.5301 mL
50 mM	0.0706 mL	0.353 mL	0.706 mL

Please select the appropriate solvent to prepare the stock solution, according to the solubility of the product in different solvents. Please use it as soon as possible.

Note: The dilution table applies only to solid products. For liquid products, please calculate the stock solution based on the stated concentration and/or density.

Inhibitor · Natural Compounds · Compound Libraries · Recombinant Proteins

This product is for Research Use Only · Not for Human or Veterinary or Therapeutic Use

Tel: 781-999-4286 E_mail: info@targetmol.com Address: 34 Washington Street, Wellesley Hills, MA 02481