

LMW peptide

Chemical Properties

CAS No. : 1818202-23-1

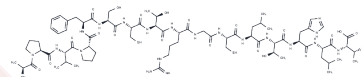
Formula: C75H121N21O20S2

Molecular Weight: 1701.02

Keep away from moisture

Storage: Powder: -20°C for 3 years | In solvent: -80°C for 1 year

Actual storage temperature shall be subject to the COA.



Biological Description

Description	LMW peptide, an antimicrobial peptide, exhibits activity against both Gram-positive and Gram-negative bacteria, including B. subtilis, L. monocytogenes, E. coli, P. aeruginosa, and V. cholera [1].
Targets(IC50)	Antibacterial

Preparing Stock Solutions

	1mg	5mg	10mg
1 mM	0.5879 mL	2.9394 mL	5.8788 mL
5 mM	0.1176 mL	0.5879 mL	1.1758 mL
10 mM	0.0588 mL	0.2939 mL	0.5879 mL
50 mM	0.0118 mL	0.0588 mL	0.1176 mL

Please select the appropriate solvent to prepare the stock solution, according to the solubility of the product in different solvents. Please use it as soon as possible.

Note: The dilution table applies only to solid products. For liquid products, please calculate the stock solution based on the stated concentration and/or density.

Inhibitor · Natural Compounds · Compound Libraries · Recombinant Proteins

This product is for Research Use Only · Not for Human or Veterinary or Therapeutic Use

Tel:781-999-4286

E_mail:info@targetmol.com

Address:34 Washington Street,Wellesley Hills,MA 02481