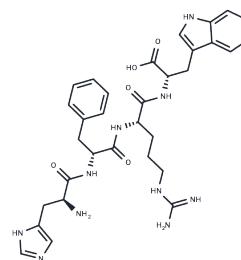


Tetrapeptide

Chemical Properties

CAS No. :	31008-44-3
Formula:	C ₃₂ H ₄₀ N ₁₀ O ₅
Molecular Weight:	644.72
Storage:	Keep away from moisture Powder: -20°C for 3 years In solvent: -80°C for 1 year <small>Actual storage temperature shall be subject to the COA.</small>



Biological Description

Description	Tetrapeptide, an α -MSH analogue, stimulates melanin production and mitigates DNA damage by attenuating reactive oxidative species generation and augmenting DNA photoproduct repair [1].
Targets(IC50)	DNA/RNA Synthesis

Preparing Stock Solutions

	1mg	5mg	10mg
1 mM	1.5511 mL	7.7553 mL	15.5106 mL
5 mM	0.3102 mL	1.5511 mL	3.1021 mL
10 mM	0.1551 mL	0.7755 mL	1.5511 mL
50 mM	0.031 mL	0.1551 mL	0.3102 mL

Please select the appropriate solvent to prepare the stock solution, according to the solubility of the product in different solvents. Please use it as soon as possible.

Note: The dilution table applies only to solid products. For liquid products, please calculate the stock solution based on the stated concentration and/or density.

Inhibitor · Natural Compounds · Compound Libraries · Recombinant Proteins

This product is for Research Use Only · Not for Human or Veterinary or Therapeutic Use

Tel:781-999-4286 E_mail:info@targetmol.com Address:34 Washington Street,Wellesley Hills,MA 02481