

## L-Isoleucyl-L-arginine

## Chemical Properties

CAS No. : 55715-01-0

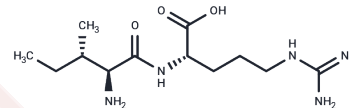
Formula: C<sub>12</sub>H<sub>25</sub>N<sub>5</sub>O<sub>3</sub>

Molecular Weight: 287.36

Keep away from moisture

Storage: Powder: -20°C for 3 years | In solvent: -80°C for 1 year

Actual storage temperature shall be subject to the COA.



## Biological Description

Description	L-Isoleucyl-L-arginine, a dipeptide composed of L-isoleucine and L-arginine, acts as a potent angiotensin-converting enzyme (ACE) inhibitor and is utilized in hypertension research [1].
Targets(IC50)	Angiotensin-converting Enzyme (ACE)

## Preparing Stock Solutions

	1mg	5mg	10mg
1 mM	3.480 mL	17.3998 mL	34.7996 mL
5 mM	0.696 mL	3.480 mL	6.9599 mL
10 mM	0.348 mL	1.740 mL	3.480 mL
50 mM	0.0696 mL	0.348 mL	0.696 mL

Please select the appropriate solvent to prepare the stock solution, according to the solubility of the product in different solvents. Please use it as soon as possible.

Note: The dilution table applies only to solid products. For liquid products, please calculate the stock solution based on the stated concentration and/or density.

Inhibitor · Natural Compounds · Compound Libraries · Recombinant Proteins

This product is for Research Use Only · Not for Human or Veterinary or Therapeutic Use

Tel: 781-999-4286

E\_mail: info@targetmol.com

Address: 34 Washington Street, Wellesley Hills, MA 02481