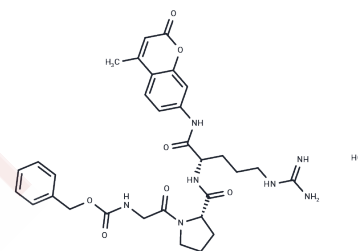


Z-Gly-Pro-Arg-AMC hydrochloride

Chemical Properties

CAS No. :	201928-42-9
Formula:	C ₃₁ H ₃₈ ClN ₇ O ₇
Molecular Weight:	656.13
Storage:	Keep away from direct sunlight Store at -20°C Actual storage temperature shall be subject to the COA.



Biological Description

Description	Z-Gly-Pro-Arg-AMC hydrochloride is a synthetic peptide that is often used as a trypsin and histone K fluorescent substrate to measure enzyme activity, which fluoresces when the enzyme is cleaved from the peptide.
Targets(IC50)	Cysteine Protease, Serine Protease

Solubility Information

Solubility	DMSO: 80 mg/mL (121.93 mM), Sonication is recommended. (< 1 mg/ml refers to the product slightly soluble or insoluble)
------------	---

Preparing Stock Solutions

	1mg	5mg	10mg
1 mM	1.5241 mL	7.6204 mL	15.2409 mL
5 mM	0.3048 mL	1.5241 mL	3.0482 mL
10 mM	0.1524 mL	0.762 mL	1.5241 mL
50 mM	0.0305 mL	0.1524 mL	0.3048 mL

Please select the appropriate solvent to prepare the stock solution, according to the solubility of the product in different solvents. Please use it as soon as possible.

Note: The dilution table applies only to solid products. For liquid products, please calculate the stock solution based on the stated concentration and/or density.

Reference

Mosztbacher D, Demcsák A, Sahin-Tóth M. Measuring digestive protease activation in the mouse pancreas. *Pancreatology*. 2020 Mar;20(2):288-292.

Li WA, Barry ZT, Cohen JD, Wilder CL, Deeds RJ, Keegan PM, Platt MO. Detection of femtomole quantities of mature cathepsin K with zymography. *Anal Biochem*. 2010 Jun 1;401(1):91-8.

Inhibitor · Natural Compounds · Compound Libraries · Recombinant Proteins

This product is for Research Use Only · Not for Human or Veterinary or Therapeutic Use

Tel:781-999-4286 E_mail:info@targetmol.com Address:34 Washington Street,Wellesley Hills,MA 02481