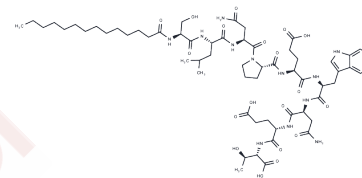


PKC $\beta$ II Peptide Inhibitor I

## Chemical Properties

CAS No. :	862502-26-9
Formula:	C61H94N12O19
Molecular Weight:	1299.47
Storage:	Keep away from moisture Powder: -20°C for 3 years   In solvent: -80°C for 1 year <small>Actual storage temperature shall be subject to the COA.</small>



## Biological Description

Description	PKC $\beta$ II Peptide Inhibitor I, a specific PKC $\beta$ II inhibitor, exhibits cardioprotective properties in a rat cardiac ischemia/reperfusion injury model and mitigates vascular endothelial dysfunction [1].
Targets(IC50)	PKC

## Preparing Stock Solutions

	1mg	5mg	10mg
1 mM	0.7695 mL	3.8477 mL	7.6954 mL
5 mM	0.1539 mL	0.7695 mL	1.5391 mL
10 mM	0.077 mL	0.3848 mL	0.7695 mL
50 mM	0.0154 mL	0.077 mL	0.1539 mL

Please select the appropriate solvent to prepare the stock solution, according to the solubility of the product in different solvents. Please use it as soon as possible.

Note: The dilution table applies only to solid products. For liquid products, please calculate the stock solution based on the stated concentration and/or density.

Inhibitor · Natural Compounds · Compound Libraries · Recombinant Proteins

This product is for Research Use Only · Not for Human or Veterinary or Therapeutic Use

Tel: 781-999-4286 E\_mail: info@targetmol.com Address: 34 Washington Street, Wellesley Hills, MA 02481