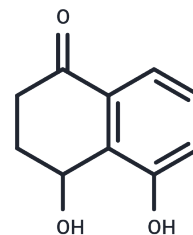


## (Rac)-Sclerone

## Chemical Properties

CAS No. :	19638-58-5
Formula:	C <sub>10</sub> H <sub>10</sub> O <sub>3</sub>
Molecular Weight:	178.18
Storage:	Powder: -20°C for 3 years   In solvent: -80°C for 1 year Actual storage temperature shall be subject to the COA.



## Biological Description

Description	(Rac)-Sclerone, a natural product isolated from the green husk of <i>Carya illinoensis</i> , exhibits significant AChE inhibition activity with an IC <sub>50</sub> value of 192.65 ± 10.12 µg/mL [1].
Targets(IC <sub>50</sub> )	Others,Cholinesterase (ChE)

## Preparing Stock Solutions

	1mg	5mg	10mg
1 mM	5.6123 mL	28.0615 mL	56.123 mL
5 mM	1.1225 mL	5.6123 mL	11.2246 mL
10 mM	0.5612 mL	2.8062 mL	5.6123 mL
50 mM	0.1122 mL	0.5612 mL	1.1225 mL

Please select the appropriate solvent to prepare the stock solution, according to the solubility of the product in different solvents. Please use it as soon as possible.

Note: The dilution table applies only to solid products. For liquid products, please calculate the stock solution based on the stated concentration and/or density.

**Inhibitor · Natural Compounds · Compound Libraries · Recombinant Proteins**

This product is for Research Use Only · Not for Human or Veterinary or Therapeutic Use

Tel:781-999-4286 E\_mail:info@targetmol.com Address:34 Washington Street,Wellesley Hills,MA 02481