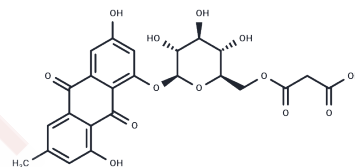


Emoghrelin

Chemical Properties

CAS No. :	928262-58-2
Formula:	C ₂₄ H ₂₂ O ₁₃
Molecular Weight:	518.42
Storage:	Powder: -20°C for 3 years In solvent: -80°C for 1 year Actual storage temperature shall be subject to the COA.



Biological Description

Description	Emoghrelin, extracted from Heshouwu (<i>Polygonum multiflorum</i>), promotes the secretion of growth hormone by activating the ghrelin receptor [1].
Targets(IC50)	GHSR

Preparing Stock Solutions

	1mg	5mg	10mg
1 mM	1.9289 mL	9.6447 mL	19.2894 mL
5 mM	0.3858 mL	1.9289 mL	3.8579 mL
10 mM	0.1929 mL	0.9645 mL	1.9289 mL
50 mM	0.0386 mL	0.1929 mL	0.3858 mL

Please select the appropriate solvent to prepare the stock solution, according to the solubility of the product in different solvents. Please use it as soon as possible.

Note: The dilution table applies only to solid products. For liquid products, please calculate the stock solution based on the stated concentration and/or density.

Inhibitor · Natural Compounds · Compound Libraries · Recombinant Proteins

This product is for Research Use Only · Not for Human or Veterinary or Therapeutic Use

Tel: 781-999-4286 E_mail: info@targetmol.com Address: 34 Washington Street, Wellesley Hills, MA 02481