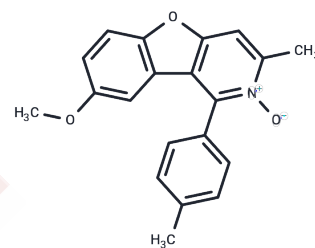


## MAT2A-IN-12

## Chemical Properties

|                   |                                                                                                                     |
|-------------------|---------------------------------------------------------------------------------------------------------------------|
| CAS No. :         | 631897-75-1                                                                                                         |
| Formula:          | C <sub>20</sub> H <sub>17</sub> NO <sub>3</sub>                                                                     |
| Molecular Weight: | 319.35                                                                                                              |
| Storage:          | Powder: -20°C for 3 years   In solvent: -80°C for 1 year<br>Actual storage temperature shall be subject to the COA. |



## Biological Description

|                            |                                                                                                                                                                                                                                  |
|----------------------------|----------------------------------------------------------------------------------------------------------------------------------------------------------------------------------------------------------------------------------|
| Description                | MAT2A Allosteric Inhibitor 2 is a potent, selective inhibitor exhibiting an IC <sub>50</sub> of 5 nM and demonstrates nanomolar efficacy (IC <sub>50</sub> = 5 μM) in proliferation assays utilizing the MTAP +/- cell line [1]. |
| Targets(IC <sub>50</sub> ) | Methionine Adenosyltransferase (MAT)                                                                                                                                                                                             |

## Preparing Stock Solutions

|       | 1mg       | 5mg        | 10mg       |
|-------|-----------|------------|------------|
| 1 mM  | 3.1314 mL | 15.6568 mL | 31.3136 mL |
| 5 mM  | 0.6263 mL | 3.1314 mL  | 6.2627 mL  |
| 10 mM | 0.3131 mL | 1.5657 mL  | 3.1314 mL  |
| 50 mM | 0.0626 mL | 0.3131 mL  | 0.6263 mL  |

Please select the appropriate solvent to prepare the stock solution, according to the solubility of the product in different solvents. Please use it as soon as possible.

Note: The dilution table applies only to solid products. For liquid products, please calculate the stock solution based on the stated concentration and/or density.

Inhibitor · Natural Compounds · Compound Libraries · Recombinant Proteins

This product is for Research Use Only · Not for Human or Veterinary or Therapeutic Use

Tel: 781-999-4286 E\_mail: info@targetmol.com Address: 34 Washington Street, Wellesley Hills, MA 02481