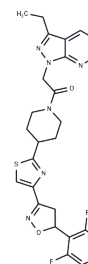


Y18501

## Chemical Properties

CAS No. : 2410627-32-4  
 Formula: C<sub>27</sub>H<sub>26</sub>F<sub>2</sub>N<sub>6</sub>O<sub>2</sub>S  
 Molecular Weight: 536.6  
 Storage: Powder: -20°C for 3 years | In solvent: -80°C for 1 year  
 Actual storage temperature shall be subject to the COA.



## Biological Description

Description	Y18501, an oxysterol-binding protein (OSBPI) inhibitor structurally akin to Oxathiapiprolin, demonstrates potent inhibition against Phytophthora spp. and Pseudoperonospora cubensis with EC <sub>50</sub> values between 0.0005 and 0.0046 µg/mL. It exhibits exceptional protective and curative effects on P. cubensis. When used in tandem with Chlorothalonil, Y18501 markedly enhances the suppression of P. cubensis [1].
Targets(IC <sub>50</sub> )	Others,Antifungal
In vitro	Y18501, at application rates of either 25 g a.i./ha or 50 g a.i./ha, demonstrated control efficacy exceeding 60% against cucumber downy mildew under greenhouse conditions [1]. In both greenhouse and field settings, Y18501 exhibited control efficacies of 72.3% and 78.9% at 25 g a.i./ha, and 80.8% and 82.2% at 50 g a.i./ha, respectively [1]. The protective activity of Y1850 (10.012-0.333 µg/mL) was greater than its curative activity; treatment with Y1850 24 hours prior to inoculation resulted in control efficacies of 70.11 and 99.43%, significantly higher than treatments administered 24 hours post-inoculation [1]. Synergistic effects against cucumber downy mildew were noted when Y18501 was combined with Chlorothalonil at ratios of 1:100, 1:70, and 1:50, with synergy ratios of 2.00, 1.83, and 2.64, respectively [1].

### Preparing Stock Solutions

---

	<b>1mg</b>	<b>5mg</b>	<b>10mg</b>
1 mM	1.8636 mL	9.3179 mL	18.6359 mL
5 mM	0.3727 mL	1.8636 mL	3.7272 mL
10 mM	0.1864 mL	0.9318 mL	1.8636 mL
50 mM	0.0373 mL	0.1864 mL	0.3727 mL

---

Please select the appropriate solvent to prepare the stock solution, according to the solubility of the product in different solvents. Please use it as soon as possible.

Note: The dilution table applies only to solid products. For liquid products, please calculate the stock solution based on the stated concentration and/or density.

**Inhibitor · Natural Compounds · Compound Libraries · Recombinant Proteins**

This product is for Research Use Only · Not for Human or Veterinary or Therapeutic Use

Tel:781-999-4286 E\_mail:info@targetmol.com Address:34 Washington Street,Wellesley Hills,MA 02481