

S-Gem

Chemical Properties

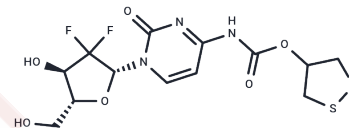
CAS No. : 2169925-98-6

Formula: C₁₃H₁₅F₂N₃O₆S₂

Molecular Weight: 411.4

Storage: Powder: -20°C for 3 years | In solvent: -80°C for 1 year

Actual storage temperature shall be subject to the COA.



Biological Description

Description	S-Gem, a thioredoxin reductase (TrxR)-dependent prodrug of Gemcitabine, is selectively activated by TrxR. Studies indicate that S-Gem exhibits lower cytotoxicity than Gemcitabine [1].
Targets(IC50)	Apoptosis, Nucleoside Antimetabolite/Analog, Autophagy, DNA/RNA Synthesis

Preparing Stock Solutions

	1mg	5mg	10mg
1 mM	2.4307 mL	12.1536 mL	24.3072 mL
5 mM	0.4861 mL	2.4307 mL	4.8614 mL
10 mM	0.2431 mL	1.2154 mL	2.4307 mL
50 mM	0.0486 mL	0.2431 mL	0.4861 mL

Please select the appropriate solvent to prepare the stock solution, according to the solubility of the product in different solvents. Please use it as soon as possible.

Note: The dilution table applies only to solid products. For liquid products, please calculate the stock solution based on the stated concentration and/or density.

Inhibitor · Natural Compounds · Compound Libraries · Recombinant Proteins

This product is for Research Use Only · Not for Human or Veterinary or Therapeutic Use

Tel: 781-999-4286 E_mail: info@targetmol.com Address: 34 Washington Street, Wellesley Hills, MA 02481