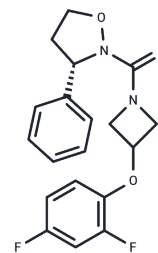


## RIP1 kinase inhibitor 6

## Chemical Properties

CAS No. :	2428401-62-9
Formula:	C <sub>19</sub> H <sub>18</sub> F <sub>2</sub> N <sub>2</sub> O <sub>3</sub>
Molecular Weight:	360.35
Storage:	Powder: -20°C for 3 years   In solvent: -80°C for 1 year Actual storage temperature shall be subject to the COA.



## Biological Description

Description	RIP1 Kinase Inhibitor 6 is a potent and selective inhibitor of RIP1 kinase, demonstrating inhibitory activity with an IC <sub>50</sub> of less than 100 nM in a human RIP1 kinase assay[1].
Targets(IC <sub>50</sub> )	RIP kinase

## Preparing Stock Solutions

	1mg	5mg	10mg
1 mM	2.7751 mL	13.8754 mL	27.7508 mL
5 mM	0.555 mL	2.7751 mL	5.5502 mL
10 mM	0.2775 mL	1.3875 mL	2.7751 mL
50 mM	0.0555 mL	0.2775 mL	0.555 mL

Please select the appropriate solvent to prepare the stock solution, according to the solubility of the product in different solvents. Please use it as soon as possible.

Note: The dilution table applies only to solid products. For liquid products, please calculate the stock solution based on the stated concentration and/or density.

Inhibitor · Natural Compounds · Compound Libraries · Recombinant Proteins

This product is for Research Use Only · Not for Human or Veterinary or Therapeutic Use

Tel: 781-999-4286 E\_mail: info@targetmol.com Address: 34 Washington Street, Wellesley Hills, MA 02481