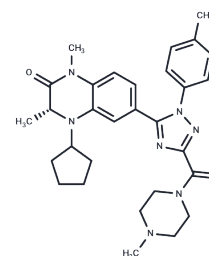


## BET-IN-14

## Chemical Properties

CAS No. :	2243669-93-2
Formula:	C30H37N7O2
Molecular Weight:	527.66
Storage:	Powder: -20°C for 3 years   In solvent: -80°C for 1 year Actual storage temperature shall be subject to the COA.



## Biological Description

Description	BET-IN-14 is a pan BET inhibitor with an IC50 of 5.35 nM, demonstrating oral activity and anticancer properties [1].
Targets(IC50)	Epigenetic Reader Domain
In vitro	BET-IN-14 (Compound 171) exhibited antitumor activity across various cancer cell lines, with an average IC50 of 174.7 nM, particularly in MM.1S, Ty-82, MV-4-11, and KG-1 cells over 72 hours [1].
In vivo	BET-IN-14 (Compound 171), administered orally at doses of 50 and 100 mg/kg once daily, inhibited tumor growth in mice with MV-4-11 xenografts [1].

## Preparing Stock Solutions

	1mg	5mg	10mg
1 mM	1.8952 mL	9.4758 mL	18.9516 mL
5 mM	0.379 mL	1.8952 mL	3.7903 mL
10 mM	0.1895 mL	0.9476 mL	1.8952 mL
50 mM	0.0379 mL	0.1895 mL	0.379 mL

Please select the appropriate solvent to prepare the stock solution, according to the solubility of the product in different solvents. Please use it as soon as possible.

Note: The dilution table applies only to solid products. For liquid products, please calculate the stock solution based on the stated concentration and/or density.

Inhibitor · Natural Compounds · Compound Libraries · Recombinant Proteins

This product is for Research Use Only · Not for Human or Veterinary or Therapeutic Use

Tel:781-999-4286 E\_mail:info@targetmol.com Address:34 Washington Street,Wellesley Hills,MA 02481