

SHP2-IN-22

Chemical Properties

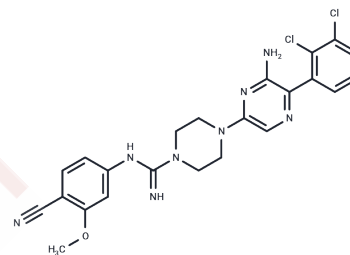
CAS No. : 2802453-88-7

Formula: C₂₃H₂₂Cl₂N₈O

Molecular Weight: 497.38

Storage: Powder: -20°C for 3 years | In solvent: -80°C for 1 year

Actual storage temperature shall be subject to the COA.



Biological Description

Description	SHP2-IN-22, a potent SHP2 allosteric inhibitor, exhibits an IC ₅₀ value of 17.7 nM and effectively suppresses proliferation, migration, and invasion in MIA PaCa-2 pancreatic cancer cells. This compound is utilized in the study of Kirsten rat sarcoma viral oncogene (KRAS) mutant cancer research [1].
Targets(IC ₅₀)	Others,Phosphatase,Ras,Kras

Preparing Stock Solutions

	1mg	5mg	10mg
1 mM	2.0105 mL	10.0527 mL	20.1054 mL
5 mM	0.4021 mL	2.0105 mL	4.0211 mL
10 mM	0.2011 mL	1.0053 mL	2.0105 mL
50 mM	0.0402 mL	0.2011 mL	0.4021 mL

Please select the appropriate solvent to prepare the stock solution, according to the solubility of the product in different solvents. Please use it as soon as possible.

Note: The dilution table applies only to solid products. For liquid products, please calculate the stock solution based on the stated concentration and/or density.

Inhibitor · Natural Compounds · Compound Libraries · Recombinant Proteins

This product is for Research Use Only · Not for Human or Veterinary or Therapeutic Use

Tel:781-999-4286

E_mail:info@targetmol.com

Address:34 Washington Street,Wellesley Hills,MA 02481