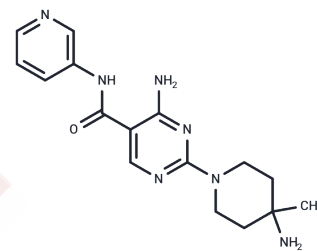


SHP2-IN-13

Chemical Properties

CAS No. :	2951854-02-5
Formula:	C16H21N7O
Molecular Weight:	327.38
Storage:	Powder: -20°C for 3 years In solvent: -80°C for 1 year Actual storage temperature shall be subject to the COA.



Biological Description

Description	SHP2-IN-13 is an orally active, highly selective allosteric inhibitor targeting the SHP2 "tunnel site," exhibiting an IC50 of 83.0 nM. It holds potential for research into cancers with RTK oncogenic drivers and diseases associated with SHP2.
Targets(IC50)	Others,Phosphatase
In vitro	SHP2-IN-13 (compound 129) effectively inhibits the pERK signaling pathway in a dose-dependent manner, with IC50 values of 0.59 μ M in NSCLC cells and 0.63 \pm 0.32 μ M in NCI-H1975-OR cells [1]. At concentrations from 0 to 30 μ M over 24 hours, it suppresses pERK levels and RTK-driven proliferation in NCI-H1975 cells and inhibits pERK levels in RTK-resistant NSCLC cells [1].
In vivo	In pharmacokinetic studies, SHP2-IN-13 (compound 129) (IV/PO; 5mg/kg) demonstrated high clearance, substantial volume of distribution (13.9 L/kg), and a moderate half-life (T 1/2 = 5.31 h), with oral bioavailability (F= 55.07 \pm 7.93%) exceeding that of SHP099 (F= 46%), making it suitable for further in vivo antitumor pharmacodynamic evaluation [1]. SHP2-IN-13 (oral gavage; 20 mg/kg; daily) exhibited potent anti-leukemic efficacy, which significantly reduced leukemic burden, and nearly eradicated CD45+ leukemic cells from human blood and spleen samples [1].

Preparing Stock Solutions

	1mg	5mg	10mg
1 mM	3.0546 mL	15.2728 mL	30.5455 mL
5 mM	0.6109 mL	3.0546 mL	6.1091 mL
10 mM	0.3055 mL	1.5273 mL	3.0546 mL
50 mM	0.0611 mL	0.3055 mL	0.6109 mL

Please select the appropriate solvent to prepare the stock solution, according to the solubility of the product in different solvents. Please use it as soon as possible.

Note: The dilution table applies only to solid products. For liquid products, please calculate the stock solution based on the stated concentration and/or density.

Inhibitor · Natural Compounds · Compound Libraries · Recombinant Proteins

This product is for Research Use Only · Not for Human or Veterinary or Therapeutic Use

Tel:781-999-4286 E_mail:info@targetmol.com Address:34 Washington Street,Wellesley Hills,MA 02481