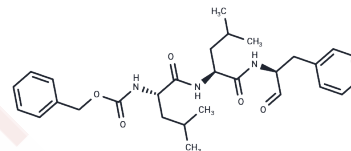


Z-LLF-CHO

Chemical Properties

CAS No. :	133429-58-0
Formula:	C ₂₉ H ₃₉ N ₃ O ₅
Molecular Weight:	509.64
Storage:	Keep away from moisture Powder: -20°C for 3 years In solvent: -80°C for 1 year <small>Actual storage temperature shall be subject to the COA.</small>



Biological Description

Description	Z-LLF-CHO (Z-Leu-Leu-Phe-CHO) effectively inhibits the chymotrypsin-like activity of the pituitary multicatalytic proteinase complex with a Ki value of 460 nM and also serves as an inhibitor of NF-κB nuclear translocation, as documented in references [1] [2].
Targets(IC50)	Proteasome

Preparing Stock Solutions

	1mg	5mg	10mg
1 mM	1.9622 mL	9.8108 mL	19.6217 mL
5 mM	0.3924 mL	1.9622 mL	3.9243 mL
10 mM	0.1962 mL	0.9811 mL	1.9622 mL
50 mM	0.0392 mL	0.1962 mL	0.3924 mL

Please select the appropriate solvent to prepare the stock solution, according to the solubility of the product in different solvents. Please use it as soon as possible.

Note: The dilution table applies only to solid products. For liquid products, please calculate the stock solution based on the stated concentration and/or density.

Inhibitor · Natural Compounds · Compound Libraries · Recombinant Proteins

This product is for Research Use Only · Not for Human or Veterinary or Therapeutic Use

Tel: 781-999-4286 E_mail: info@targetmol.com Address: 34 Washington Street, Wellesley Hills, MA 02481