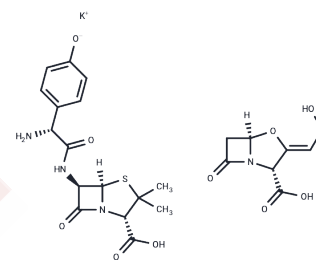


Amoxicillin-clavulanate potassium

Chemical Properties

CAS No. :	74469-00-4
Formula:	C ₂₄ H ₂₇ KN ₄ O ₁₀ S
Molecular Weight:	602.66
Storage:	Keep away from direct sunlight, Keep away from moisture Powder: -20°C for 3 years In solvent: -80°C for 1 year <small>Actual storage temperature shall be subject to the COA.</small>



Biological Description

Description	Amoxicillin-clavulanate potassium is an orally administered antibiotic and combination agent indicated for various bacterial infections. Amoxicillin is a penicillin antibiotic, whilst clavulanate potassium is a β -lactamase inhibitor that helps prevent bacterial resistance to amoxicillin.
Targets(IC50)	Antibacterial, Antibiotic

Solubility Information

Solubility	DMSO: \geq 160 mg/mL ($<$ 1 mg/ml refers to the product slightly soluble or insoluble)
In vivo Formulation	10% DMSO+40% PEG300+5% Tween 80+45% Saline: 5 mg/mL (8.3 mM), Sonication is recommended. <i>Please add the solvents sequentially, clarifying the solution as much as possible before adding the next one. Dissolve by heating and/or sonication if necessary. Working solution is recommended to be prepared and used immediately. The formulation provided above is for reference purposes only. In vivo formulations may vary and should be modified based on specific experimental conditions.</i>

Preparing Stock Solutions

	1mg	5mg	10mg
1 mM	1.6593 mL	8.2966 mL	16.5931 mL
5 mM	0.3319 mL	1.6593 mL	3.3186 mL
10 mM	0.1659 mL	0.8297 mL	1.6593 mL
50 mM	0.0332 mL	0.1659 mL	0.3319 mL

Please select the appropriate solvent to prepare the stock solution, according to the solubility of the product in different solvents. Please use it as soon as possible.

Note: The dilution table applies only to solid products. For liquid products, please calculate the stock solution based on the stated concentration and/or density.

Reference

Evans J, Hannoodee M, Wittler M. Amoxicillin Clavulanate. [Updated 2021 Dec 15].

Inhibitor · Natural Compounds · Compound Libraries · Recombinant Proteins

This product is for Research Use Only · Not for Human or Veterinary or Therapeutic Use

Tel:781-999-4286 E_mail:info@targetmol.com Address:34 Washington Street,Wellesley Hills,MA 02481