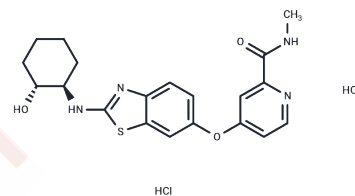


Sotuletinib dihydrochloride

Chemical Properties

CAS No. :	2222138-40-9
Formula:	C ₂₀ H ₂₄ Cl ₂ N ₄ O ₃ S
Molecular Weight:	471.4
Storage:	Powder: -20°C for 3 years In solvent: -80°C for 1 year Actual storage temperature shall be subject to the COA.



Biological Description

Description	Sotuletinib (BLZ945) dihydrochloride is an orally administered, blood-brain barrier-permeable CSF1-R inhibitor with an IC ₅₀ of 1 nM, promoting apoptosis in tumor cells and significantly restricting tumor growth in murine models, thereby proving useful in cancer and amyotrophic lateral sclerosis (ALS) studies [1].
Targets(IC ₅₀)	c-Fms

Preparing Stock Solutions

	1mg	5mg	10mg
1 mM	2.1213 mL	10.6067 mL	21.2134 mL
5 mM	0.4243 mL	2.1213 mL	4.2427 mL
10 mM	0.2121 mL	1.0607 mL	2.1213 mL
50 mM	0.0424 mL	0.2121 mL	0.4243 mL

Please select the appropriate solvent to prepare the stock solution, according to the solubility of the product in different solvents. Please use it as soon as possible.

Note: The dilution table applies only to solid products. For liquid products, please calculate the stock solution based on the stated concentration and/or density.

Inhibitor · Natural Compounds · Compound Libraries · Recombinant Proteins

This product is for Research Use Only · Not for Human or Veterinary or Therapeutic Use

Tel:781-999-4286 E_mail:info@targetmol.com Address:34 Washington Street,Wellesley Hills,MA 02481