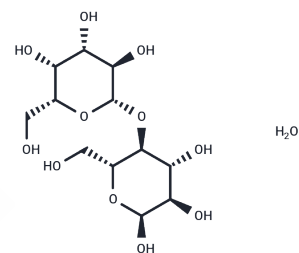


α -Lactose hydrate

Chemical Properties

CAS No. :	5989-81-1
Formula:	C ₁₂ H ₂₄ O ₁₂
Molecular Weight:	360.31
Storage:	Powder: -20°C for 3 years In solvent: -80°C for 1 year Actual storage temperature shall be subject to the COA.



Biological Description

Description	α -Lactose hydrate (α -D-Lactose monohydrate) is the principal carbohydrate found in the milk of most mammals. It is a disaccharide consisting of glucose and galactose linked by a β -1,4-glycosidic bond, existing in two anomeric forms, α and β . α -Lactose hydrate has extensive applications in the food and pharmaceutical industries, serving as a free-flowing or agglomerating agent and a diluent for pigments, flavors, or enzymes. In biological research, it is the fundamental substrate for studying lactose metabolism and the mechanisms of lactose intolerance.
Targets(IC50)	Endogenous Metabolite

Solubility Information

Solubility	DMSO: 80 mg/mL (222.03 mM), Sonication is recommended. (< 1 mg/ml refers to the product slightly soluble or insoluble)
------------	---

Preparing Stock Solutions

	1mg	5mg	10mg
1 mM	2.7754 mL	13.8769 mL	27.7539 mL
5 mM	0.5551 mL	2.7754 mL	5.5508 mL
10 mM	0.2775 mL	1.3877 mL	2.7754 mL
50 mM	0.0555 mL	0.2775 mL	0.5551 mL

Please select the appropriate solvent to prepare the stock solution, according to the solubility of the product in different solvents. Please use it as soon as possible.

Note: The dilution table applies only to solid products. For liquid products, please calculate the stock solution based on the stated concentration and/or density.

Reference

Schuck, et al. Lactose crystallization: determination of α -lactose monohydrate in spray-dried dairy products. (2002).

Inhibitor · Natural Compounds · Compound Libraries · Recombinant Proteins

This product is for Research Use Only · Not for Human or Veterinary or Therapeutic Use

Tel:781-999-4286 E_mail:info@targetmol.com Address:34 Washington Street,Wellesley Hills,MA 02481