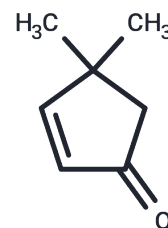


4,4-Dimethyl-2-cyclopenten-1-one

Chemical Properties

CAS No. :	22748-16-9
Formula:	C7H10O
Molecular Weight:	110.15
Storage:	Powder: -20°C for 3 years In solvent: -80°C for 1 year <small>Actual storage temperature shall be subject to the COA.</small>



Biological Description

Description	4,4-Dimethyl-2-cyclopenten-1-one, derived from Apocyniveneti Folium, exhibits enhanced tumor-specific cytotoxicity [1].
Targets(IC50)	Others
In vitro	4,4-Dimethyl-2-cyclopenten-1-one exhibits selective cytotoxicity towards tumor cells, particularly HSC-2 and HL-60, with CC50 values of 43.8 µg/mL for HSC-2, 152 µg/mL for HSC-3, 118 µg/mL for HSG, 14.0 µg/mL for HL-60, 177 µg/mL for HGF, and 123 µg/mL for normal cells (HPC) [1].

Preparing Stock Solutions

	1mg	5mg	10mg
1 mM	9.0785 mL	45.3926 mL	90.7853 mL
5 mM	1.8157 mL	9.0785 mL	18.1571 mL
10 mM	0.9079 mL	4.5393 mL	9.0785 mL
50 mM	0.1816 mL	0.9079 mL	1.8157 mL

Please select the appropriate solvent to prepare the stock solution, according to the solubility of the product in different solvents. Please use it as soon as possible.

Note: The dilution table applies only to solid products. For liquid products, please calculate the stock solution based on the stated concentration and/or density.

Inhibitor · Natural Compounds · Compound Libraries · Recombinant Proteins

This product is for Research Use Only · Not for Human or Veterinary or Therapeutic Use

Tel:781-999-4286 E_mail:info@targetmol.com Address:34 Washington Street,Wellesley Hills,MA 02481