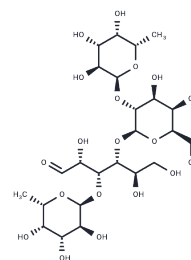


Lactodifucotetraose

Chemical Properties

| | |
|-------------------|---|
| CAS No. : | 20768-11-0 |
| Formula: | C ₂₄ H ₄₂ O ₁₉ |
| Molecular Weight: | 634.58 |
| Storage: | Powder: -20°C for 3 years In solvent: -80°C for 1 year Actual storage temperature shall be subject to the COA. |



Biological Description

| | |
|---------------|--|
| Description | Lactodifucotetraose (Difucosyllactose), a tetrasaccharide extracted from human milk, consists of one D-glucose, one D-galactose, and two L-fucose molecules [1]. |
| Targets(IC50) | Others |

Preparing Stock Solutions

| | 1mg | 5mg | 10mg |
|-------|-----------|-----------|------------|
| 1 mM | 1.5758 mL | 7.8792 mL | 15.7585 mL |
| 5 mM | 0.3152 mL | 1.5758 mL | 3.1517 mL |
| 10 mM | 0.1576 mL | 0.7879 mL | 1.5758 mL |
| 50 mM | 0.0315 mL | 0.1576 mL | 0.3152 mL |

Please select the appropriate solvent to prepare the stock solution, according to the solubility of the product in different solvents. Please use it as soon as possible.

Note: The dilution table applies only to solid products. For liquid products, please calculate the stock solution based on the stated concentration and/or density.

Inhibitor · Natural Compounds · Compound Libraries · Recombinant Proteins

This product is for Research Use Only · Not for Human or Veterinary or Therapeutic Use

Tel: 781-999-4286 E_mail: info@targetmol.com Address: 34 Washington Street, Wellesley Hills, MA 02481