

H- γ -Glu-Gln-OH

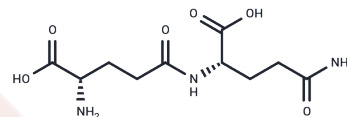
Chemical Properties

CAS No. : 10148-81-9

Formula: C₁₀H₁₇N₃O₆

Molecular Weight: 275.26

Storage: Keep away from moisture Keep away from direct sunlight
Powder: -20°C for 3 years | In solvent: -80°C for 1 year
Actual storage temperature shall be subject to the COA.



Biological Description

Description	H- γ -Glu-Gln-OH (γ -L-glutamyl-L-glutamine) is a highly hydrophilic dipeptide utilized as a building block for advanced drug delivery systems. Carriers composed of H- γ -Glu-Gln-OH, such as poly(L- γ -glutamylglutamine) (PGG), are characterized by high water solubility, superior drug-loading capacity, excellent biocompatibility, and low systemic toxicity. Conjugating drugs (e.g., Paclitaxel) to this peptide moiety significantly improves the solubility of hydrophobic agents and enhances tumor-targeting and tissue penetration (especially in glioblastoma models), leading to optimized anti-tumor efficacy.
Targets(IC50)	Others

Solubility Information

Solubility	DMSO: 80 mg/mL (290.63 mM), Sonication is recommended. (< 1 mg/ml refers to the product slightly soluble or insoluble)
------------	---

Preparing Stock Solutions

	1mg	5mg	10mg
1 mM	3.6329 mL	18.1646 mL	36.3293 mL
5 mM	0.7266 mL	3.6329 mL	7.2659 mL
10 mM	0.3633 mL	1.8165 mL	3.6329 mL
50 mM	0.0727 mL	0.3633 mL	0.7266 mL

Please select the appropriate solvent to prepare the stock solution, according to the solubility of the product in different solvents. Please use it as soon as possible.

Note: The dilution table applies only to solid products. For liquid products, please calculate the stock solution based on the stated concentration and/or density.

Reference

Yu J, et al. Self-Assembled Tumor-Penetrating Peptide-Modified Poly(L- γ -glutamylglutamine)-Paclitaxel Nanoparticles Based on Hydrophobic Interaction for the Treatment of Glioblastoma. *Bioconjug Chem.* 2017 Nov 15;28(11):2823-2831.

Inhibitor · Natural Compounds · Compound Libraries · Recombinant Proteins

This product is for Research Use Only · Not for Human or Veterinary or Therapeutic Use

Tel:781-999-4286 E_mail:info@targetmol.com Address:34 Washington Street,Wellesley Hills,MA 02481