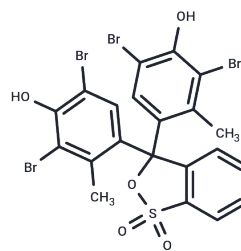


## Bromocresol green

## Chemical Properties

CAS No. :	76-60-8
Formula:	C <sub>21</sub> H <sub>14</sub> Br <sub>4</sub> O <sub>5</sub> S
Molecular Weight:	698.01
Storage:	Keep away from direct sunlight Powder: -20°C for 3 years   In solvent: -80°C for 1 year <small>Actual storage temperature shall be subject to the COA.</small>



## Biological Description

Description	Bromocresol Green, a triphenylmethane dye, serves primarily as a pH indicator transitioning from yellow ( $\lambda_{\text{max}}=435$ nm, protonated form) at pH 4.15 to blue ( $\lambda_{\text{max}}=615$ nm, deprotonated form) in alkaline environments. Utilized in biochemical analysis, it quantifies serum protein and albumin, assesses creatinine concentration, and evaluates cell viability [1] [2] [3] [4]. The dye exhibits a bio-based, yellow-green to blue-green hue.
Targets(IC50)	Others

## Preparing Stock Solutions

	1mg	5mg	10mg
1 mM	1.4326 mL	7.1632 mL	14.3264 mL
5 mM	0.2865 mL	1.4326 mL	2.8653 mL
10 mM	0.1433 mL	0.7163 mL	1.4326 mL
50 mM	0.0287 mL	0.1433 mL	0.2865 mL

Please select the appropriate solvent to prepare the stock solution, according to the solubility of the product in different solvents. Please use it as soon as possible.

Note: The dilution table applies only to solid products. For liquid products, please calculate the stock solution based on the stated concentration and/or density.

**Inhibitor · Natural Compounds · Compound Libraries · Recombinant Proteins**

This product is for Research Use Only · Not for Human or Veterinary or Therapeutic Use

Tel:781-999-4286 E\_mail:info@targetmol.com Address:34 Washington Street,Wellesley Hills,MA 02481