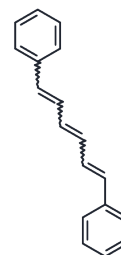


## 1,6-Diphenylhexa-1,3,5-triene

## Chemical Properties

CAS No. :	1720-32-7
Formula:	C <sub>18</sub> H <sub>16</sub>
Molecular Weight:	232.32
Storage:	Keep away from direct sunlight Store at -20°C <small>Actual storage temperature shall be subject to the COA.</small>



## Biological Description

Description	1,6-Diphenylhexa-1,3,5-triene (DPH) is a membrane fluorescence probe exhibiting strong fluorescence upon incorporation into lipid monolayers/bilayers, with Ex/Em = 360/430 nm.
Targets(IC50)	Lipid
In vitro	Using 1,6-Diphenylhexa-1,3,5-triene (DPH) as a fluorescent probe, membrane suspension (100 µL) were incubated with 800 µL of Buffer I, 900 µL of DPH working solution (1:150 dilution from 5 mmol/L DPH stock solution), and 200 µL of Aβ-containing buffer I to investigate the effects of different β-amyloid (Aβ) peptides on the fluidity of Homo sapiens cerebral cortex-like membranes.[1]

## Solubility Information

Solubility	DMSO: 9 mg/mL (38.74 mM), Sonication is recommended. (< 1 mg/ml refers to the product slightly soluble or insoluble)
------------	---

## Preparing Stock Solutions

	1mg	5mg	10mg
1 mM	4.3044 mL	21.522 mL	43.0441 mL
5 mM	0.8609 mL	4.3044 mL	8.6088 mL
10 mM	0.4304 mL	2.1522 mL	4.3044 mL
50 mM	0.0861 mL	0.4304 mL	0.8609 mL

Please select the appropriate solvent to prepare the stock solution, according to the solubility of the product in different solvents. Please use it as soon as possible.

Note: The dilution table applies only to solid products. For liquid products, please calculate the stock solution based on the stated concentration and/or density.

Reference

Müller WE, et al. Effects of beta-amyloid peptides on the fluidity of membranes from frontal and parietal lobes of human brain. High potencies of A beta 1-42 and A beta 1-43. Amyloid. 1998 Mar;5(1):10-5.

**Inhibitor · Natural Compounds · Compound Libraries · Recombinant Proteins**

This product is for Research Use Only · Not for Human or Veterinary or Therapeutic Use

Tel:781-999-4286 E\_mail:info@targetmol.com Address:34 Washington Street,Wellesley Hills,MA 02481