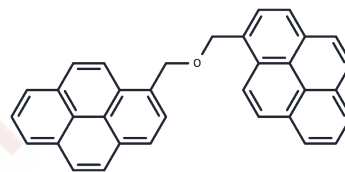


(1,1'-Dipyrenyl)dimethyl ether

Chemical Properties

CAS No. :	74833-81-1
Formula:	C34H22O
Molecular Weight:	446.54
Storage:	Keep away from direct sunlight Powder: -20°C for 3 years In solvent: -80°C for 1 year <small>Actual storage temperature shall be subject to the COA.</small>



Biological Description

Description	(1,1'-Dipyrenyl)dimethyl ether exhibits intramolecular excimer fluorescence, which competes with the fluorescence of the locally excited pyrene chromophore, and is soluble in synthetic phospholipid membranes [1].
Targets(IC50)	Others

Preparing Stock Solutions

	1mg	5mg	10mg
1 mM	2.2394 mL	11.1972 mL	22.3944 mL
5 mM	0.4479 mL	2.2394 mL	4.4789 mL
10 mM	0.2239 mL	1.1197 mL	2.2394 mL
50 mM	0.0448 mL	0.2239 mL	0.4479 mL

Please select the appropriate solvent to prepare the stock solution, according to the solubility of the product in different solvents. Please use it as soon as possible.

Note: The dilution table applies only to solid products. For liquid products, please calculate the stock solution based on the stated concentration and/or density.

Inhibitor · Natural Compounds · Compound Libraries · Recombinant Proteins

This product is for Research Use Only · Not for Human or Veterinary or Therapeutic Use

Tel:781-999-4286 E_mail:info@targetmol.com Address:34 Washington Street,Wellesley Hills,MA 02481