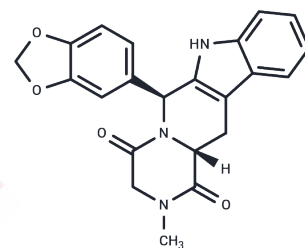


## cis-ent-Tadalafil

## Chemical Properties

CAS No. :	171596-28-4
Formula:	C <sub>22</sub> H <sub>19</sub> N <sub>3</sub> O <sub>4</sub>
Molecular Weight:	389.4
Storage:	Keep away from direct sunlight Powder: -20°C for 3 years   In solvent: -80°C for 1 year <small>Actual storage temperature shall be subject to the COA.</small>



## Biological Description

Description	cis-ent-Tadalafil (cis-ent-IC-351) is a potent and selective PDE5 inhibitor that lowers blood pressure. cis-ent-Tadalafil is a potent and selective PDE5 inhibitor that reduces blood pressure.
Targets(IC50)	Others,PDE

## Preparing Stock Solutions

	1mg	5mg	10mg
1 mM	2.5681 mL	12.8403 mL	25.6805 mL
5 mM	0.5136 mL	2.5681 mL	5.1361 mL
10 mM	0.2568 mL	1.284 mL	2.5681 mL
50 mM	0.0514 mL	0.2568 mL	0.5136 mL

Please select the appropriate solvent to prepare the stock solution, according to the solubility of the product in different solvents. Please use it as soon as possible.

Note: The dilution table applies only to solid products. For liquid products, please calculate the stock solution based on the stated concentration and/or density.

## Reference

Daugan A, et al. The discovery of tadalafil: a novel and highly selective PDE5 inhibitor. 2: 2,3,6,7,12,12a-hexahydropyrazino[1',2':1,6]pyrido[3,4-b]indole-1,4-dione analogues. J Med Chem. 2003 Oct 9;46(21):4533-42.

**Inhibitor · Natural Compounds · Compound Libraries · Recombinant Proteins**

This product is for Research Use Only · Not for Human or Veterinary or Therapeutic Use

Tel:781-999-4286 E\_mail:info@targetmol.com Address:34 Washington Street,Wellesley Hills,MA 02481