

STM2120

## Chemical Properties

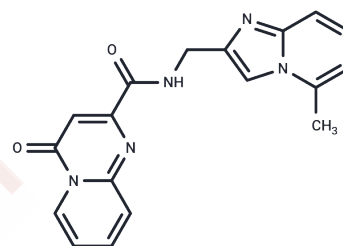
CAS No. : 2762286-04-2

Formula: C<sub>18</sub>H<sub>15</sub>N<sub>5</sub>O<sub>2</sub>

Molecular Weight: 333.34

Storage: Powder: -20°C for 3 years | In solvent: -80°C for 1 year

Actual storage temperature shall be subject to the COA.



## Biological Description

Description	STM2120 is a potent METTL3 inhibitor (IC <sub>50</sub> : 64.5 μM) with inhibitory effect on METTL14.
Targets(IC <sub>50</sub> )	Others
In vitro	STM2120, at concentrations ranging from 0.04 to 50 μM for a duration of 72 hours, exhibits no impact on the proliferation of MOLM-13 cells.

## Solubility Information

Solubility	DMSO: 3.34 mg/mL (10.02 mM), Sonication is recommended. (< 1 mg/ml refers to the product slightly soluble or insoluble)
In vivo Formulation	10% DMSO+40% PEG300+5% Tween 80+45% Saline: 1 mg/mL (3 mM), Sonication is recommended. <i>Please add the solvents sequentially, clarifying the solution as much as possible before adding the next one. Dissolve by heating and/or sonication if necessary. Working solution is recommended to be prepared and used immediately. The formulation provided above is for reference purposes only. In vivo formulations may vary and should be modified based on specific experimental conditions.</i>

### Preparing Stock Solutions

---

	<b>1mg</b>	<b>5mg</b>	<b>10mg</b>
1 mM	2.9999 mL	14.9997 mL	29.9994 mL
5 mM	0.600 mL	2.9999 mL	5.9999 mL
10 mM	0.300 mL	1.500 mL	2.9999 mL
50 mM	0.060 mL	0.300 mL	0.600 mL

---

Please select the appropriate solvent to prepare the stock solution, according to the solubility of the product in different solvents. Please use it as soon as possible.

Note: The dilution table applies only to solid products. For liquid products, please calculate the stock solution based on the stated concentration and/or density.

### Reference

Yankova E, et al. Small-molecule inhibition of METTL3 as a strategy against myeloid leukaemia. Nature. 2021 May; 593(7860):597-601.

**Inhibitor · Natural Compounds · Compound Libraries · Recombinant Proteins**

This product is for Research Use Only · Not for Human or Veterinary or Therapeutic Use

Tel:781-999-4286 E\_mail:info@targetmol.com Address:34 Washington Street,Wellesley Hills,MA 02481