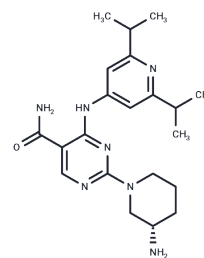


CS640

Chemical Properties

CAS No. : 2388506-83-8
 Formula: C₂₁H₃₁N₇O
 Molecular Weight: 397.52
 Storage: Powder: -20°C for 3 years | In solvent: -80°C for 1 year
 Actual storage temperature shall be subject to the COA.



Biological Description

Description	CS640 is a selective calmodulin-dependent kinase inhibitor, targeting multiple isoforms, namely CaMK1D, CaMK1B, CaMK1A, CaMK1G, PIP5K1C, MEK5, RIPK4, and MLK3, with respective IC ₅₀ values of 0.08, 0.03, 0.001, 0.001, 11.2, 0.025, 5.69, and 2.75 μM. Additionally, CS640 exhibits inhibitory properties toward CYP450 enzymes 2C9 and 2C19 with IC ₅₀ values of 6 and 10 μM, correspondingly [1].
Targets(IC ₅₀)	Others

Preparing Stock Solutions

	1mg	5mg	10mg
1 mM	2.5156 mL	12.578 mL	25.156 mL
5 mM	0.5031 mL	2.5156 mL	5.0312 mL
10 mM	0.2516 mL	1.2578 mL	2.5156 mL
50 mM	0.0503 mL	0.2516 mL	0.5031 mL

Please select the appropriate solvent to prepare the stock solution, according to the solubility of the product in different solvents. Please use it as soon as possible.

Note: The dilution table applies only to solid products. For liquid products, please calculate the stock solution based on the stated concentration and/or density.

Inhibitor · Natural Compounds · Compound Libraries · Recombinant Proteins

This product is for Research Use Only · Not for Human or Veterinary or Therapeutic Use

Tel: 781-999-4286 E_mail: info@targetmol.com Address: 34 Washington Street, Wellesley Hills, MA 02481