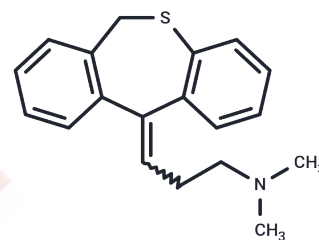


## Dothiepin

## Chemical Properties

CAS No. :	113-53-1
Formula:	C <sub>19</sub> H <sub>21</sub> N <sub>S</sub>
Molecular Weight:	295.44
Storage:	Powder: -20°C for 3 years   In solvent: -80°C for 1 year Actual storage temperature shall be subject to the COA.



## Biological Description

Description	Dothiepin (Dosulepin; Dothep), an antidepressant with sedative/anxiolytic properties, preferentially inhibits noradrenaline over serotonin uptake, enhancing noradrenergic neurotransmission by blocking neuronal reuptake. Additionally, it acts as a histamine H <sub>1</sub> -receptor antagonist and lacks cardiotoxicity. Its analgesic efficacy is noted in conditions such as psychogenic facial pain, idiopathic fibromyalgia syndrome, and rheumatoid arthritis [1].
Targets(IC50)	5-HT Receptor, Histamine Receptor

## Preparing Stock Solutions

	1mg	5mg	10mg
1 mM	3.3848 mL	16.9239 mL	33.8478 mL
5 mM	0.677 mL	3.3848 mL	6.7696 mL
10 mM	0.3385 mL	1.6924 mL	3.3848 mL
50 mM	0.0677 mL	0.3385 mL	0.677 mL

Please select the appropriate solvent to prepare the stock solution, according to the solubility of the product in different solvents. Please use it as soon as possible.

Note: The dilution table applies only to solid products. For liquid products, please calculate the stock solution based on the stated concentration and/or density.

Inhibitor · Natural Compounds · Compound Libraries · Recombinant Proteins

This product is for Research Use Only · Not for Human or Veterinary or Therapeutic Use

Tel: 781-999-4286 E\_mail: info@targetmol.com Address: 34 Washington Street, Wellesley Hills, MA 02481