

LCKLSL hydrochloride

Chemical Properties

CAS No. :

Formula: C₃₀H₅₈ClN₇O₈S

Molecular Weight: 712.34

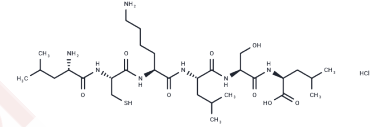
Storage:

Keep away from moisture, Store at low temperature,

Keep away from direct sunlight

Powder: -20°C for 3 years | In solvent: -80°C for 1 year

Actual storage temperature shall be subject to the COA.



Biological Description

Description	LCKLSL hydrochloride is a hexapeptide compound and competitive inhibitor of membrane-bound protein A2 (AnxA2) with potential anti-angiogenic activity that inhibits the development of autoimmune encephalomyelitis (EAE) in mice.
Targets(IC50)	Annexin A
In vitro	In human retinal microvascular endothelial cells (RMVEC), treatment with LCKLSL hydrochloride (0-2 mg) inhibited the production of fibrinolytic enzymes and suppressed VEGF-induced tPA activity under hypoxic conditions. [1]
In vivo	In two in vivo models of angiogenesis (chicken chorioallantoic membrane and mouse stromal plug assay), the application of LCKLSL hydrochloride showed an inhibitory effect on the angiogenic response. After LCKLSL hydrochloride peptide treatment, the length of blood vessels was significantly shortened. At a dose of 5 µg/mL, LCKLSL hydrochloride peptide significantly reduced the number of branches, junctions, and endpoints of vessels. [1]

Solubility Information

Solubility	H ₂ O: 8 mg/mL (11.23 mM), Sonication is recommended. DMSO: 20 mg/mL (28.08 mM), Sonication is recommended. (< 1 mg/ml refers to the product slightly soluble or insoluble)
In vivo Formulation	Saline: 2 mg/mL (2.81 mM), Solution <i>Please add the solvents sequentially, clarifying the solution as much as possible before adding the next one. Dissolve by heating and/or sonication if necessary. Working solution is recommended to be prepared and used immediately. The formulation provided above is for reference purposes only. In vivo formulations may vary and should be modified based on specific experimental conditions.</i>

Preparing Stock Solutions

	1mg	5mg	10mg
1 mM	1.4038 mL	7.0191 mL	14.0382 mL
5 mM	0.2808 mL	1.4038 mL	2.8076 mL
10 mM	0.1404 mL	0.7019 mL	1.4038 mL
50 mM	0.0281 mL	0.1404 mL	0.2808 mL

Please select the appropriate solvent to prepare the stock solution, according to the solubility of the product in different solvents. Please use it as soon as possible.

Note: The dilution table applies only to solid products. For liquid products, please calculate the stock solution based on the stated concentration and/or density.

Reference

Valapala M, et al. A competitive hexapeptide inhibitor of annexin A2 prevents hypoxia-induced angiogenic events. J Cell Sci. 2011 May 1;124(Pt 9):1453-64.

Inhibitor · Natural Compounds · Compound Libraries · Recombinant Proteins

This product is for Research Use Only · Not for Human or Veterinary or Therapeutic Use

Tel:781-999-4286 E_mail:info@targetmol.com Address:34 Washington Street,Wellesley Hills,MA 02481