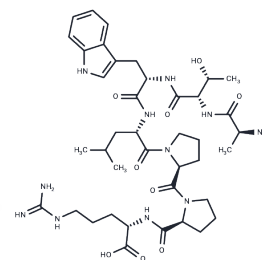


## ATWLPPR Peptide

## Chemical Properties

CAS No. :	272121-15-0
Formula:	C40H61N11O9
Molecular Weight:	839.98
Storage:	Keep away from moisture Powder: -20°C for 3 years   In solvent: -80°C for 1 year <small>Actual storage temperature shall be subject to the COA.</small>



## Biological Description

Description	ATWLPPR Peptide is a biologically active peptide functioning as a specific antagonist to VEGFR2/KDR. It binds to VEGFR2 (KDR/flk), thereby completely inhibiting VEGF binding to KDR and blocking VEGF-induced angiogenesis in vivo. Moreover, it selectively inhibits human endothelial cell proliferation in vitro and effectively abolishes VEGF-induced angiogenesis in vivo.
Targets(IC50)	VEGFR

## Preparing Stock Solutions

	1mg	5mg	10mg
1 mM	1.1905 mL	5.9525 mL	11.905 mL
5 mM	0.2381 mL	1.1905 mL	2.381 mL
10 mM	0.1191 mL	0.5953 mL	1.1905 mL
50 mM	0.0238 mL	0.1191 mL	0.2381 mL

Please select the appropriate solvent to prepare the stock solution, according to the solubility of the product in different solvents. Please use it as soon as possible.

Note: The dilution table applies only to solid products. For liquid products, please calculate the stock solution based on the stated concentration and/or density.

Inhibitor · Natural Compounds · Compound Libraries · Recombinant Proteins

This product is for Research Use Only · Not for Human or Veterinary or Therapeutic Use

Tel:781-999-4286 E\_mail:info@targetmol.com Address:34 Washington Street,Wellesley Hills,MA 02481